

Strategic Infrastructure



Strategic Infrastructure

Ecuador is the gateway to the Andean market with a population of over 100 million.



10 renewed and 13 operating nationwide airports, of which 4 are international ones.



Ecuador has more than **966 km. state railways**, linking Highlands and Coastal regions and is mainly used for tourism purposes.



The **port system** composed of seven state ports and ten private docks, specialized in general cargo and oil, the main ones are: Guayaquil, Manta, Bolívar..



Fluvial Transportation: Ecuador has several navigable rivers, such as: Guayas River and Napo River, which is a waterway that is part of Manta-Manaos axis.

Ministry of Transport and Public Works MTOP, seeks to contribute to national development through the formulation of policies, regulations, plans, programs and projects to ensure a National Intermodal and Multimodal Transport, based on a international quality transport network standards, aligned with economic, social, environmental guidelines and the national development plan.



❖ **Web page:** <http://www.obraspublicas.gob.ec/>

Strategic Infrastructure

Logistic infrastructure projects			
Nº.	Projects	Location	Investment Amount (Millions of USD)
1	Highway Sto. Domingo - Jujan	Provinces of Santo Domingo de los Tsáchilas and Los Ríos	1,467.00
2	Highway Naranjal – Rio 7	Provinces of Guayas and El Oro	461.00
3	Manta Port operation	Province of Manabi	175.00
4	Manta Airport Operation	Province of Manabi	
5	Santa Rosa Airport Operation	Province of El Oro	
6	Port Logistic Development	Province of Esmeraldas	2.00
7	Santo Domingo de los Tsáchilas Logistics Platform	Province of Santo Domingo de los Tsáchilas	40.00
8	Repair shipyard	Guayas - Posorja	203.00
9	Shipyard for Offshore Support Vessel Class boats	Guayas - Posorja	102.00
TOTAL			2,450.00

Highway Sto. Domingo - Jujan

Project description:

- The highway is located between the towns of Sto . Domingo - Quevedo - Babahoyo - Jujan, with an approximate length of 214 km .

Objective:

Improve connectivity between provinces, with a highway capacity, improving quality standards and land transport security.

Estimated investment:

USD 1,467.0 MM.

Investment model:

Direct

Location: Provinces of Santo Domingo de los Tsáchilas and Los Ríos.



Implementation model:

Public Private partnership. 30-year concession.

Highway Naranjal – Río Siete

Location: Guayas and El Oro provinces

Project description:

- The highway between the localities of Naranjal – Río Siete, part of the route Guayaquil - Machala, with an approximate length of 50 km.

Objective:

Improve connectivity between provinces, with the objective of providing better walkability and an optimum level of service, of around 12 thousand users who pass daily through this route.

Estimated investment:

USD 461 MM.

Investment model:

Direct



Implementation model:

Public Private Partnership. 30-year concession.

Manta Port Operation

Modernization and operation of Manta Port

Project description:

- Multipurpose port with capacity for handling all kinds of loads.
- It is the closest port to Asia on the West Coast of South America.
- It has a natural depth of 12 meters and a dock of 110 ha.

Objective:

Increase traffic and operational capacity of the port, as well as the quality and efficiency of port services.

Estimated investment:

USD 175.0 MM.

Investment model:

Direct

Location: Manta, Province of Manabí



Implementation model:

Public Private Partnership. 40-year concession

Manta Airport Operation

Development, management and operation of Manta Airport

Project description:

- Runway: 2,852 m x 45 m.
- Passenger terminal: 2,465 m² (350 pax).
- Weekly frequencies:
 - National: 29
 - International: 3

Objective:

Enhance the airport with new routes and more commercial operators, increasing the flow of passengers.

Estimated Investment:

Open to proposals for the development of Manta airport.

Investment model:

Direct

Location: Manta, Province of Manabí



Implementation model:

Public Private Partnership.

Granting of administration and operation.

Santa Rosa Regional Airport

Project description:

- Regional Airport with runway 2,470mx45m, terminal of 4,803 m2 and 200 pax capacity in rush hour. It has all the radio navigation aids and runway lighting.

Objective:

Enhance the airport with new routes and more commercial operators, increasing the flow of passengers.

Estimated Investment:

Open to proposals for the development of Santa Rosa airport.

Investment model:

Direct

Location: Santa Rosa, Province of El Oro



Implementation model:

Public Private Partnership.

Granting of administration and operation.

Port Logistics Development

Development for the logistic support of the commercial port of Esmeraldas to provide services

Project description:

- It is a multipurpose port with handling all kinds of loads.
- It has a total area of 22 hectares.
- Currently handles 22 % load of the port.
- It requires improvement of machinery, infrastructure wineries and technologies.

Objective:

Improve the competitiveness of the Port of Esmeraldas.

Estimated investment:

USD 2,0 MM.

Investment model:

Direct

Location : Esmeraldas, Province of Esmeraldas.



Implementation model:

Joint Venture.

Santo Domingo de los Tsáchilas Logistics Platform

Project description:

- Public Logistics Platform of Ecuador, located in the most important logistics hub within the country. Specialized area with infrastructure and value-added services to the load.

Objective:

Develop, manage, and administer the logistics and Connectivity Platform, to provide quality services, driving the transformation of the productive matrix and economic development of the province and the country, where different actors coordinate their actions to benefit the competitiveness of products that make use of the infrastructure.

Estimated investment:

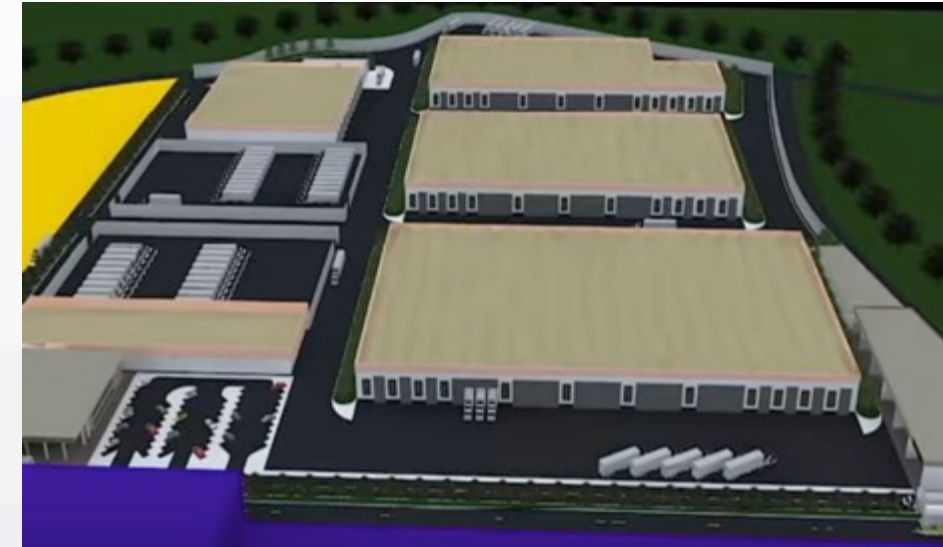
USD 40,0 MM.

Investment model:

Direct



Location: Province of Santo Domingo de los Tsáchilas.



Implementation model:

Public Private Partnership – Concession no less than 20 years.

Shipyard for Offshore Support Vessel (OSV)

Shipyard for OSV class boat building (Offshore Support Vessel)

Project description:

- Shipyard development project for the construction of two PSV ships yearlong.
- Project counts with pre-feasibility studies.

Objective: Shipyard implementation for attending demands for fishing fleet and merchant navy.

Estimated investment:

USD 102.0 MM

Location: Posorja, Province of Guayas



Implementation model:

- Strategic partnership.

Repair shipyard

Shipyard for repair service and construction of ships

Project description:

- Shipyard development project for the repair and construction of ships up to 120 m in length.
- Production capacity: 133 repairs and 2 buildings per year.
- It has pre-feasibility studies.

Objective:

Implementation of an offshore shipyard for activities repair, maintenance services and construction of fishing, merchant and navy vessels.

Estimated investment:

USD 203.0 MM

Location: Posorja, Province of Guayas



Implementation model:

- Strategic partnership.